

VACUUM
KF
COMPONENTS

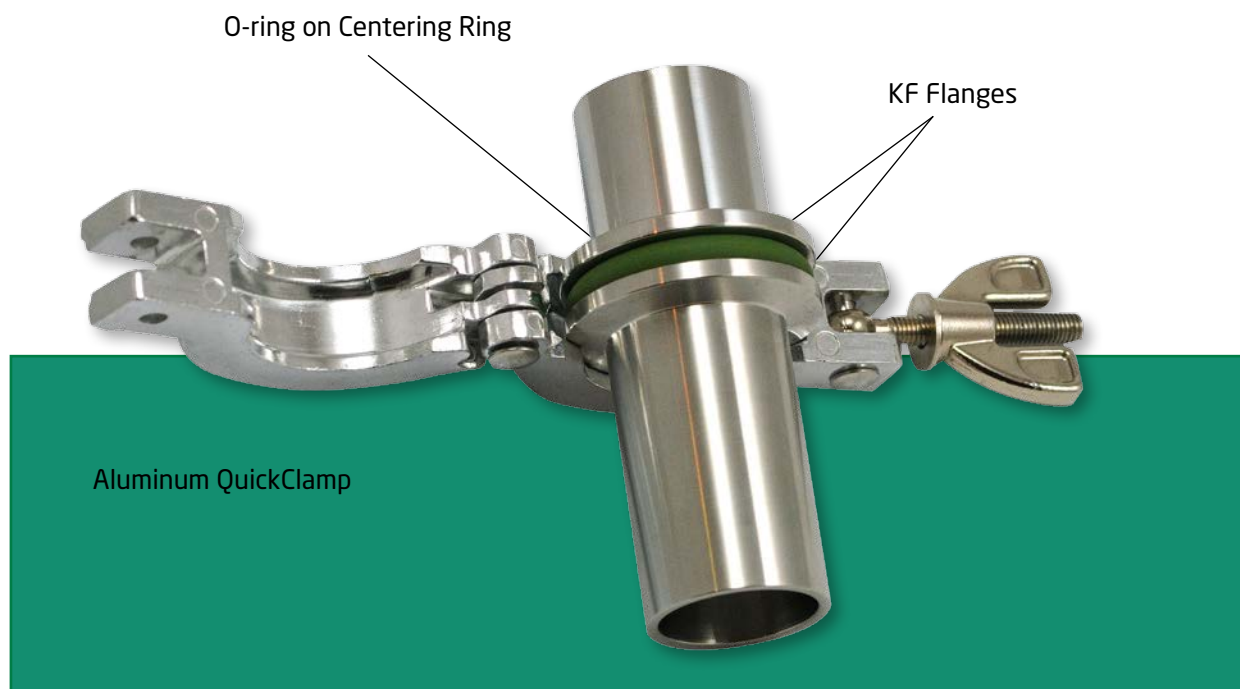
-
- Clamps and Seals D 03

KF flanges utilize an Aluminum clamp with a single wingnut fastener allowing frequent disassembly without tools. The vacuum seal is effected by uniform application of pressure by the clamp on the 15° surface of the flange. The mating flange surfaces compress an "O"-ring (held in place by a metal centering ring) to produce a seal that can be used in vacuum applications down to 10^{-7} mbar and baked to 200°C (sustained to 150°C), for Viton O-ring.

The KF range of flanges and fittings are manufactured from high quality 316L (1.4404) Stainless Steel*. Some items are also available in Aluminum.

All given dimensions are nominal in mm.

*304L (1.4407) available on request.

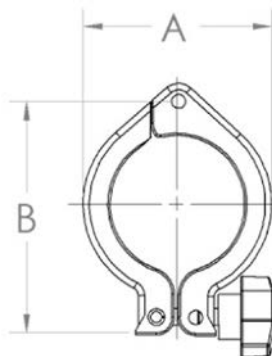


Clamps and Seals

KF QUICK CLAMP - ALUMINUM

P/N	DN	A	B
KF16C	16	40	64
KF25C	25	50	74
KF40C	40	65	89
KF50C	50	87	109

Temperature range -10 to 200°C.



KF NON MAGNETIC QUICK CLAMP

P/N	DN	TO FIT FLANGE OD
KF16AC	16	30
KF25AC	25	40
KF40AC	40	55
KF50AC	50	75

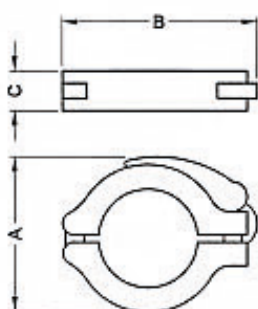
Temperature range -10 to 125°C.
Material : Aluminum + Stainless Steel (screw)



KF RAPID FASTENING CLAMP

P/N	SPRING	LEVER	DN	A	B	C
KF10/16RFC KF10/16RFCS	Steel Stainless Steel	Polyamide Aluminum	10/16	52 52	70 71	16 16
KF20/25RFC KF20/25RFCS	Steel Stainless Steel	Polyamide Aluminum	20/25	61 61	81 72	16 16
KF32/40RFC KF32/40RFCS	Steel Stainless Steel	Polyamide Aluminum	32/40	75 78	98 99	16 18

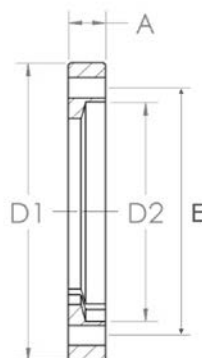
Clamping ring half : aluminum.



BULKHEAD CLAMP - ALUMINUM

P/N	DN	A	D1	D2	E
BHC16	16	9.2	50.8	30	38.1
BHC25	25	9.8	60.3	40	48.0
BHC40	40	9.3	74.6	55	62.0
BHC50	50	10.3	95.2	75	83.05

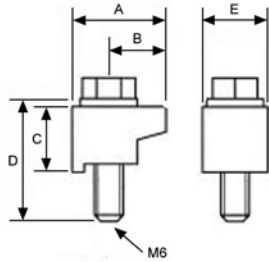
6 holes \varnothing 5.0.



KF CLAW GRIP

P/N	DN	A	B	C	D	E	SET OF
KF10/50WC	10 - 50	19.5	11.5	12.5	20	14	4 pcs

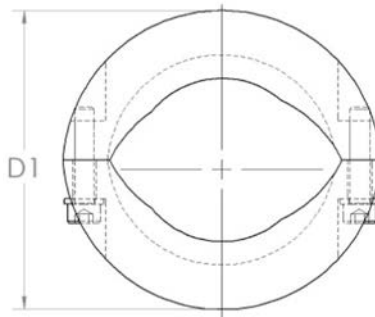
Claw: aluminum.
Screw & washer: Stainless Steel.



KF METAL SEAL CLAMP - STAINLESS STEEL

P/N	DN	D1	ID
KF10/16MSC	10/16	54	22
KF20/25MSC	20/25	64	32
KF32/40MSC	32/40	82	47
KF50MSC	50	112	62

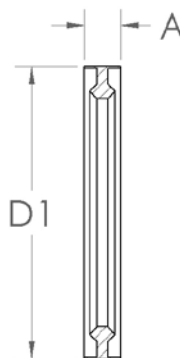
304L Stainless Steel.
Pressure range 10^{-8} mbar to 10 bars.



KF METAL SEAL - ALUMINUM

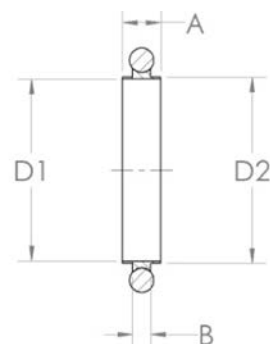
P/N	DN	D1	A
KF10/16MS	10/16	32	7
KF20/25MS	20/25	42	7
KF32/40MS	32/40	57	7
KF50MS	50	77	7

Pressure range 10^{-8} mbar to 3 bar.



KF CENTERING RINGS

P/N	DN	A	B	D1	D2
KF16--	16	8	3.9	16	17
KF25--	25	8	3.9	25	26
KF40--	40	8	3.9	40	41
KF50--	50	8	3.9	50	52



P/N	MATERIALS	TEMPERATURE RANGE
--SVCR	316L Stainless Steel / green Viton	-10 to 200°C (sustained 150°C)
--SNCR	316L Stainless Steel / Nitrile	-10 to 100°C
--AVCR	Aluminum / green Viton	-10 to 200°C (sustained 150°C)
--ANCR	Aluminum / Nitrile	-10 to 100°C



Pressure range 10^{-7} mbar to 1 bar.

Other O-ring materials on request.

KF ADAPTER CENTERING RINGS

P/N	DN	A	B	D1	D2
KF10/16--	10/16	8	3.9	17	12
KF20/25--	25	8	3.9	26	22
KF32/40--	40	8	3.9	41	34



P/N	MATERIALS	TEMPERATURE RANGE
--SVRCR	316L Stainless Steel / green Viton	-10 to 200°C (sustained 150°C)
--SNRCR	316L Stainless Steel / Nitrile	-10 to 100°C

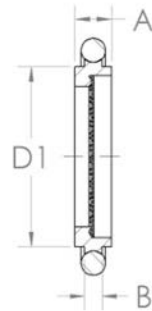


Pressure range 10^{-7} mbar to 1 bar.

Other O-ring materials on request.

CENTERING RING WITH MESH SCREEN

P/N	DN	A	B	D1
KF16MCRV	16	8	3.9	17
KF25MCRV	25	8	3.9	26
KF40MCRV	40	8	3.9	41
KF50MCRV	50	8	3.9	52



Stainless Steel centering ring with 72 mesh screen (0.5 x 0.5 x 1.0mm).

Pressure range 10⁻⁷ mbar to 1 bar.

Temperature range -10 to 200°C (sustained 150°C).

Other O-ring materials on request.

CENTERING RING WITH FILTER

P/N	DN	A	B	C	D	Pore Size (mm)	E ⁽¹⁾ (m ³ /h)
KF10MCRF02 KF10MCRF04	10	12	8 9	8	3.9	0.02 0.004	0.5 -
KF16MCRF02 KF16MCRF04	16	17	14 13	8	3.9	0.02 0.004	1.2 -
KF25MCRF02 KF25MCRF04	25	26	23 22	8	3.9	0.02 0.004	4.2 -
KF40MCRF02 KF40MCRF04	40	41	38 35.5	8	3.9	0.02 0.004	11.3 -
KF50MCRF02 KF50MCRF04	50	52	48 45.7	8	3.9	0.02 0.004	18.1 -

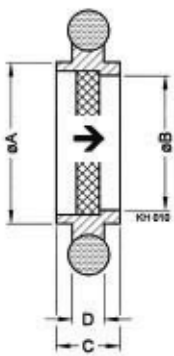
(1) Air at 0°C, 20 mbar differential pressure.

Centering ring: Stainless Steel.

Seal: Viton.

Filter: Stainless Steel 316L.

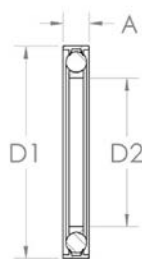
Other O-ring materials on request.



→ Recommended gas flow direction.

TRAPPED CENTERING RING

P/N	DN	A	D1	D2
KF16TCRV	16	7	31.5	16
KF25TCRV	25	7	41.5	25
KF40TCRV	40	7	56.5	40
KF50TCRV	50	7	77.5	50



Aluminum outer, Stainless Steel inner.

Seal: Viton.

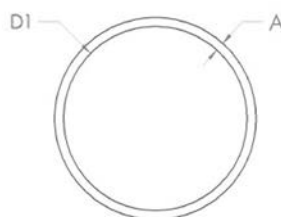
Pressure range 10^{-7} mbar to 10 bar.

Temperature range -10 to 200°C (sustained 150°C).

Other O-ring materials on request.

O-RING - VITON / NITRILE

P/N	DN	MATERIAL	A	D1
KF16VR KF16NR	16	Viton Nitrile	5	18
KF25VR KF25NR	25	Viton Nitrile	5	28
KF40VR KF40NR	40	Viton Nitrile	5	42
KF50VR KF50NR	50	Viton Nitrile	5	55



Pressure range 10^{-7} mbar to 1 bar absolute.

Other O-ring materials on request.



neyco

30 avenue de la Paix
92170 VANVES - France
Tel: +33(0)1 41 90 50 50
Fax: +33(0)1 41 90 50 51

www.neyco.fr



Vacuum D 2013-3

neyco